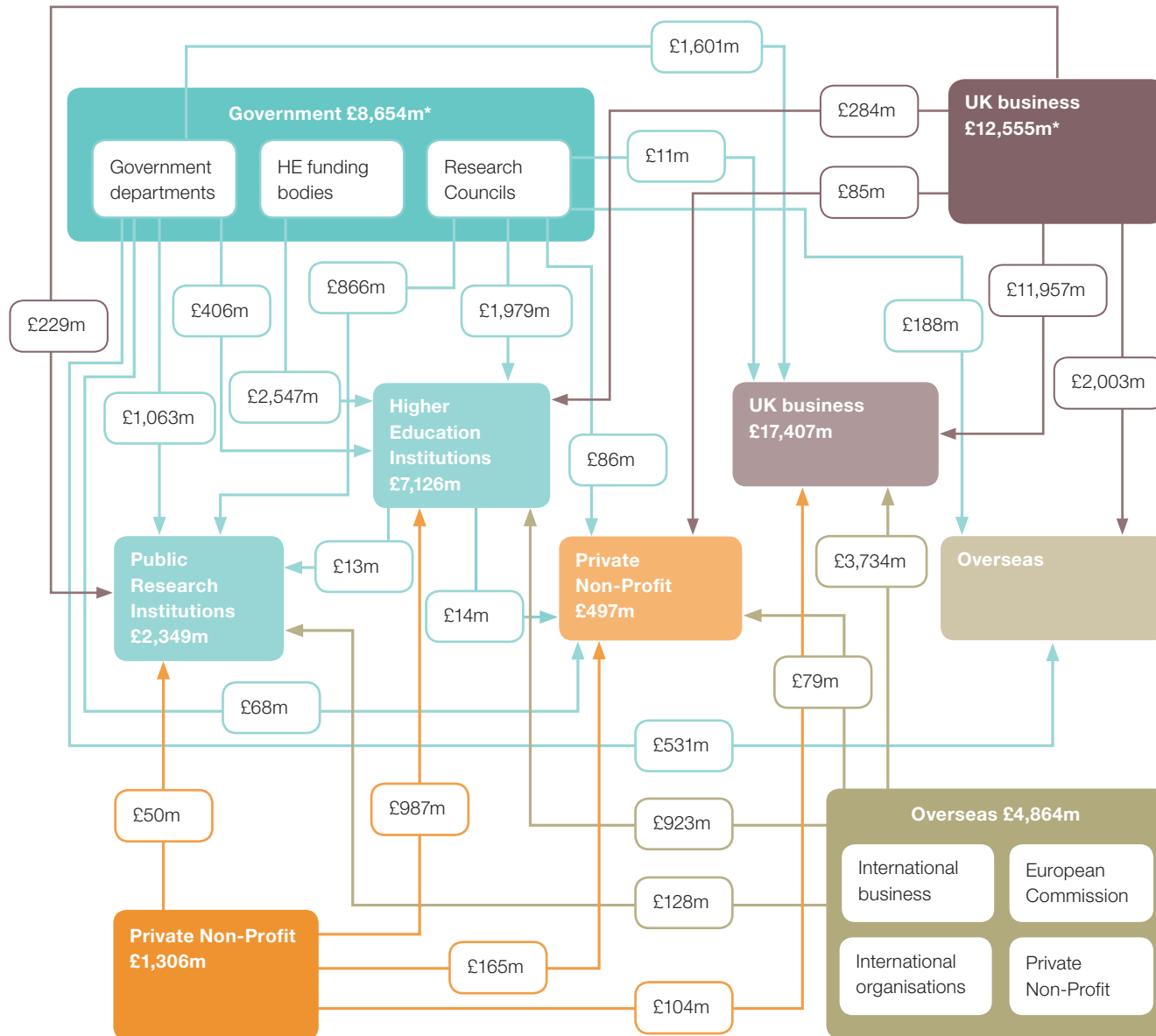


**Figure 2**

Research and Development funded and carried out across all sectors in 2011



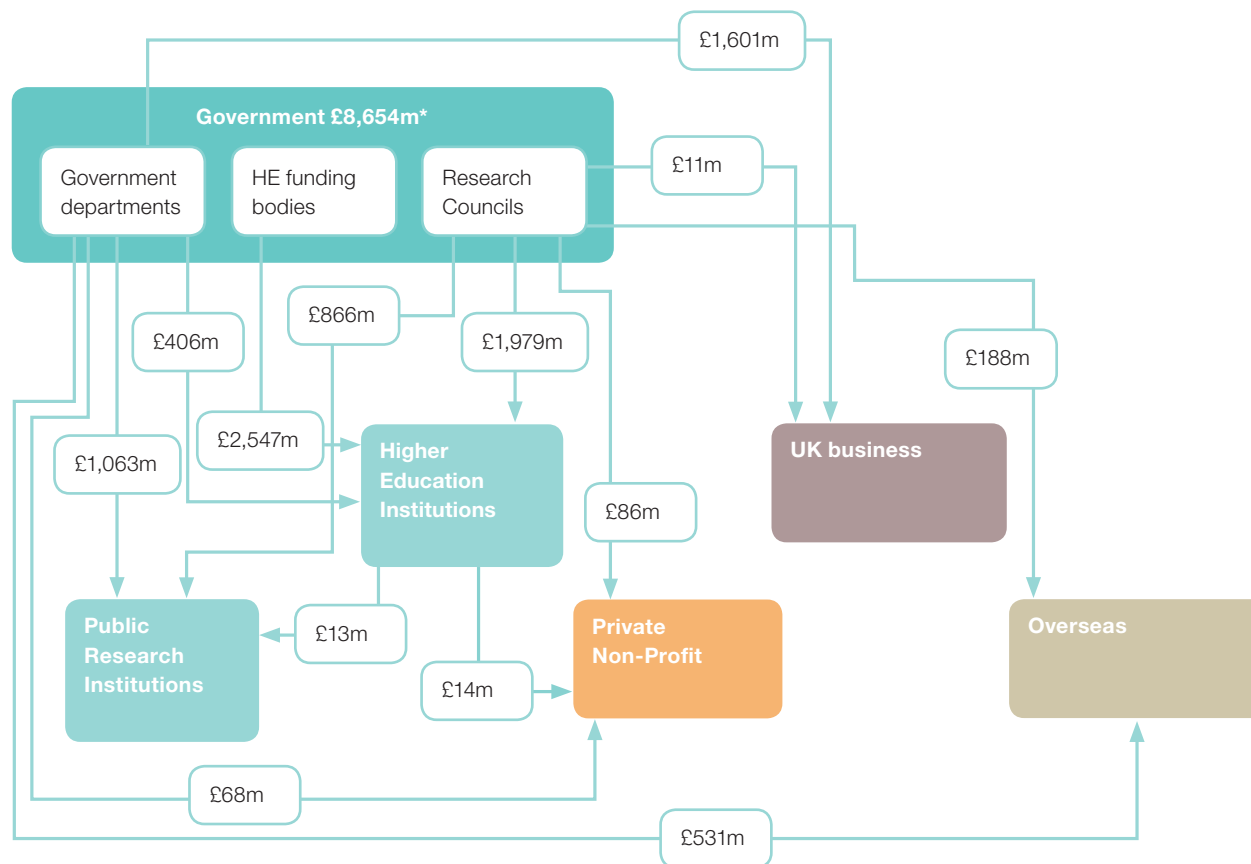
**NOTES**

- 1 Government (providing funding) is the total of government, Research Councils, Higher Education Institutions and Higher Education Funding Councils.
- 2 Higher Education funding bodies (providing funding) is the total of Higher Education Institutions and Higher Education Funding Councils.
- 3 Public Research Institutions (carrying out research) is the total of government and Research Council sectors.
- 4 There are no ONS data on the Higher Education Institutions and Private Non-Profit sector's funding to overseas entities. As a result of this:
  - We have not included a total figure for R&D carried out overseas, but funded from UK entities (as this total would be incomplete).
  - To allow consistency between the totals for funding by each sector, when calculating the total funding by the government and business sectors, we have excluded the funding they provided to overseas from the total (see figures with \*).

Source: National Audit Office analysis of Office for National Statistics data. The underlying data used in the above analysis can be found at: [www.ons.gov.uk/ons/rell/rdit1/gross-domestic-expenditure-on-research-and-development/2011/tsd-gerd-2011.html](http://www.ons.gov.uk/ons/rell/rdit1/gross-domestic-expenditure-on-research-and-development/2011/tsd-gerd-2011.html)

**Figure 2**

Research and Development funded and carried out across all sectors in 2011



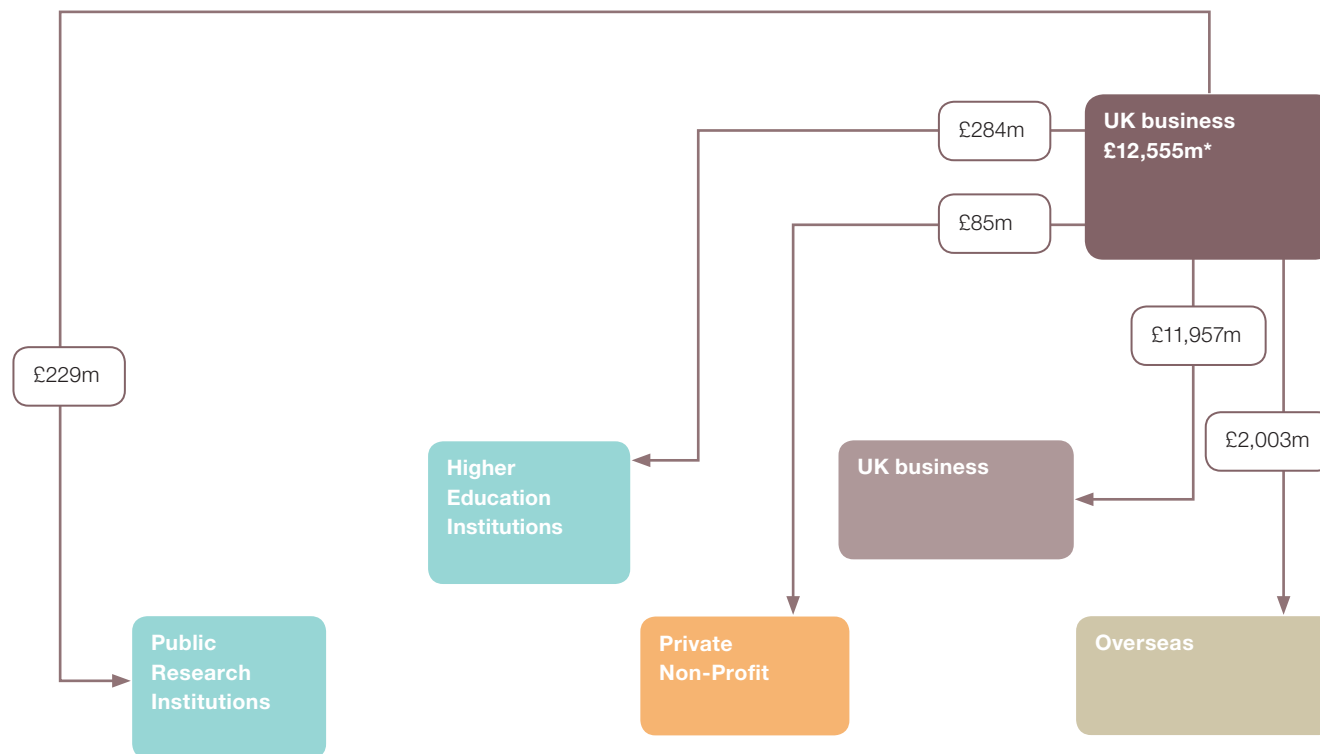
**NOTES**

- 1 Government (providing funding) is the total of government, Research Councils, Higher Education Institutions and Higher Education Funding Councils.
- 2 Higher Education funding bodies (providing funding) is the total of Higher Education Institutions and Higher Education Funding Councils.
- 3 Public Research Institutions (carrying out research) is the total of government and Research Council sectors.
- 4 There are no ONS data on the Higher Education Institutions and Private Non-Profit sector's funding to overseas entities. As a result of this:
  - We have not included a total figure for R&D carried out overseas, but funded from UK entities (as this total would be incomplete).
  - To allow consistency between the totals for funding by each sector, when calculating the total funding by the government and business sectors, we have excluded the funding they provided to overseas from the total (see figures with \*).

Source: National Audit Office analysis of Office for National Statistics data. The underlying data used in the above analysis can be found at: [www.ons.gov.uk/ons/rellrdit1/gross-domestic-expenditure-on-research-and-development/2011/tsd-gerd-2011.html](http://www.ons.gov.uk/ons/rellrdit1/gross-domestic-expenditure-on-research-and-development/2011/tsd-gerd-2011.html)

**Figure 2**

Research and Development funded and carried out across all sectors in 2011



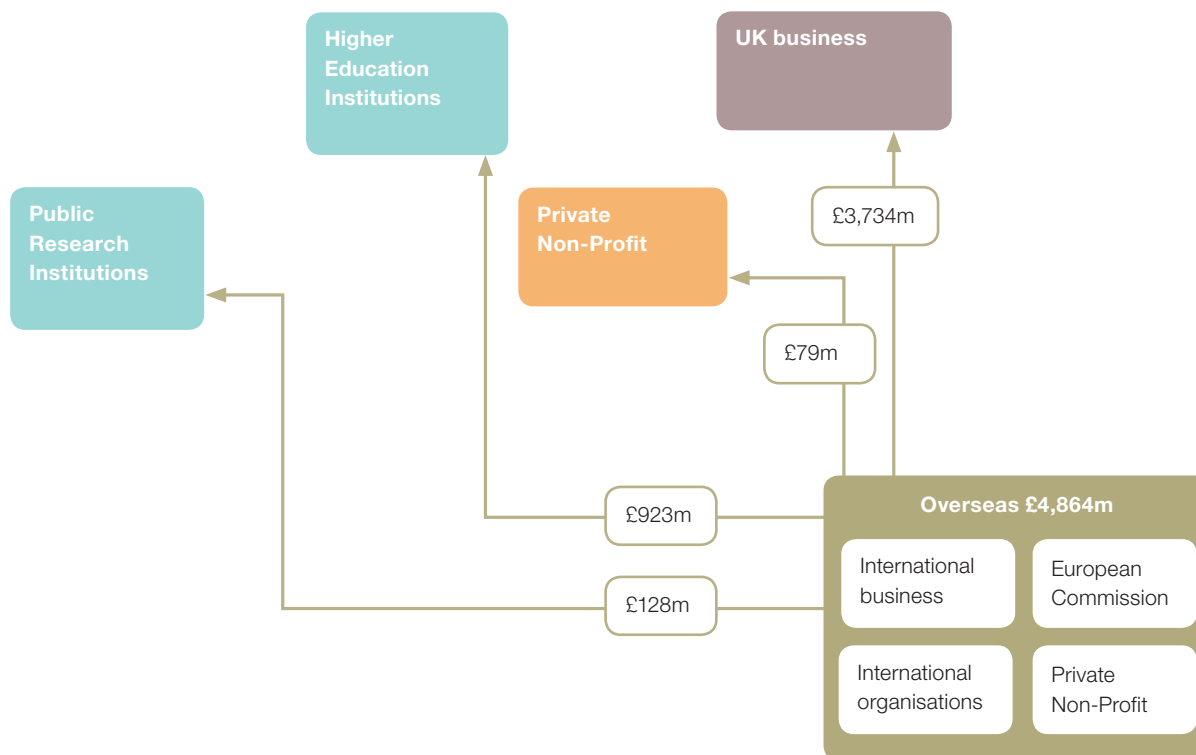
**NOTES**

- 1 Government (providing funding) is the total of government, Research Councils, Higher Education Institutions and Higher Education Funding Councils.
- 2 Higher Education funding bodies (providing funding) is the total of Higher Education Institutions and Higher Education Funding Councils.
- 3 Public Research Institutions (carrying out research) is the total of government and Research Council sectors.
- 4 There are no ONS data on the Higher Education Institutions and Private Non-Profit sector's funding to overseas entities. As a result of this:
  - We have not included a total figure for R&D carried out overseas, but funded from UK entities (as this total would be incomplete).
  - To allow consistency between the totals for funding by each sector, when calculating the total funding by the government and business sectors, we have excluded the funding they provided to overseas from the total (see figures with \*).

Source: National Audit Office analysis of Office for National Statistics data. The underlying data used in the above analysis can be found at: [www.ons.gov.uk/ons/rell/rdit1/gross-domestic-expenditure-on-research-and-development/2011/tsd-gerd-2011.html](http://www.ons.gov.uk/ons/rell/rdit1/gross-domestic-expenditure-on-research-and-development/2011/tsd-gerd-2011.html)

## Figure 2

Research and Development funded and carried out across all sectors in 2011



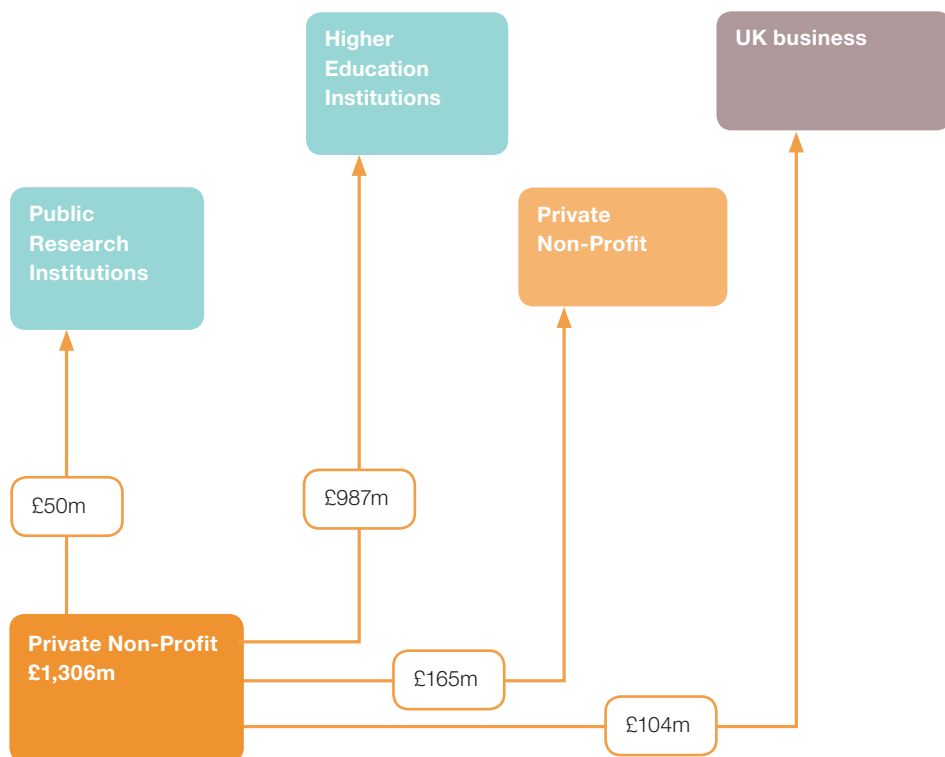
### NOTES

- 1 Government (providing funding) is the total of government, Research Councils, Higher Education Institutions and Higher Education Funding Councils.
- 2 Higher Education funding bodies (providing funding) is the total of Higher Education Institutions and Higher Education Funding Councils.
- 3 Public Research Institutions (carrying out research) is the total of government and Research Council sectors.
- 4 There are no ONS data on the Higher Education Institutions and Private Non-Profit sector's funding to overseas entities. As a result of this:
  - We have not included a total figure for R&D carried out overseas, but funded from UK entities (as this total would be incomplete).
  - To allow consistency between the totals for funding by each sector, when calculating the total funding by the government and business sectors, we have excluded the funding they provided to overseas from the total (see figures with \*).

Source: National Audit Office analysis of Office for National Statistics data. The underlying data used in the above analysis can be found at: [www.ons.gov.uk/ons/rell/rdit1/gross-domestic-expenditure-on-research-and-development/2011/tsd-gerd-2011.html](http://www.ons.gov.uk/ons/rell/rdit1/gross-domestic-expenditure-on-research-and-development/2011/tsd-gerd-2011.html)

## Figure 2

Research and Development funded and carried out across all sectors in 2011



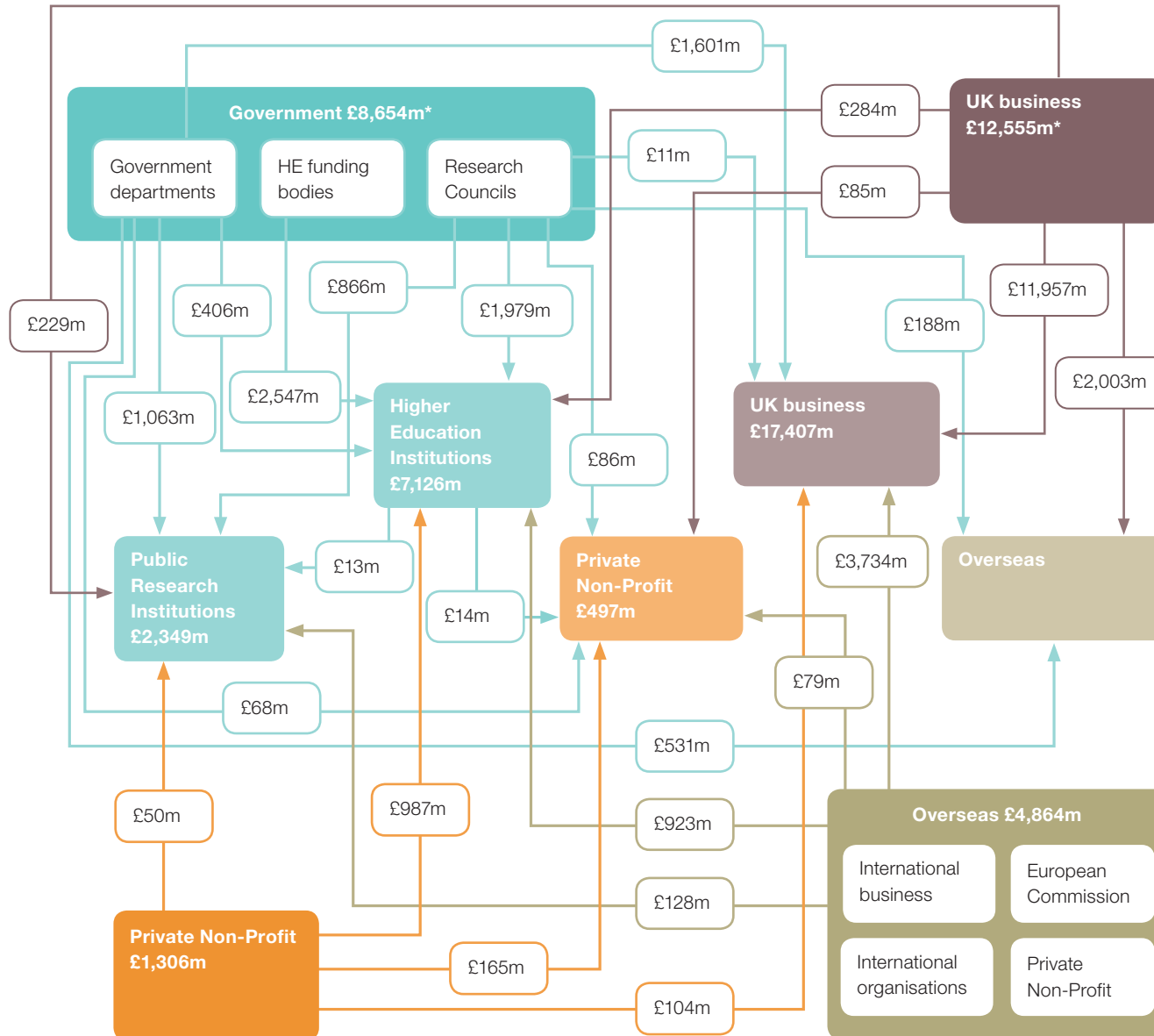
### NOTES

- 1 Government (providing funding) is the total of government, Research Councils, Higher Education Institutions and Higher Education Funding Councils.
- 2 Higher Education funding bodies (providing funding) is the total of Higher Education Institutions and Higher Education Funding Councils.
- 3 Public Research Institutions (carrying out research) is the total of government and Research Council sectors.
- 4 There are no ONS data on the Higher Education Institutions and Private Non-Profit sector's funding to overseas entities. As a result of this:
  - We have not included a total figure for R&D carried out overseas, but funded from UK entities (as this total would be incomplete).
  - To allow consistency between the totals for funding by each sector, when calculating the total funding by the government and business sectors, we have excluded the funding they provided to overseas from the total (see figures with \*).

Source: National Audit Office analysis of Office for National Statistics data. The underlying data used in the above analysis can be found at: [www.ons.gov.uk/ons/rell/rdit1/gross-domestic-expenditure-on-research-and-development/2011/tsd-gerd-2011.html](http://www.ons.gov.uk/ons/rell/rdit1/gross-domestic-expenditure-on-research-and-development/2011/tsd-gerd-2011.html)

**Figure 2**

Research and Development funded and carried out across all sectors in 2011



**NOTES**

- 1 Government (providing funding) is the total of government, Research Councils, Higher Education Institutions and Higher Education Funding Councils.
- 2 Higher Education funding bodies (providing funding) is the total of Higher Education Institutions and Higher Education Funding Councils.
- 3 Public Research Institutions (carrying out research) is the total of government and Research Council sectors.
- 4 There are no ONS data on the Higher Education Institutions and Private Non-Profit sector's funding to overseas entities. As a result of this:
  - We have not included a total figure for R&D carried out overseas, but funded from UK entities (as this total would be incomplete).
  - To allow consistency between the totals for funding by each sector, when calculating the total funding by the government and business sectors, we have excluded the funding they provided to overseas from the total (see figures with \*).

Source: National Audit Office analysis of Office for National Statistics data. The underlying data used in the above analysis can be found at: [www.ons.gov.uk/ons/rell/rdit1/gross-domestic-expenditure-on-research-and-development/2011/tsd-gerd-2011.html](http://www.ons.gov.uk/ons/rell/rdit1/gross-domestic-expenditure-on-research-and-development/2011/tsd-gerd-2011.html)